

KEY WEST BOTANICAL GARDEN SOCIETY



NOVEMBER 2010

Officers

President: Rick Harty
Vice President: MaryCarlin Porter
Treasurer: Vicki Grant
Secretary: Sharon Toppino

Board of Directors

Ward Brockett
 Pat Cummings
 Stephen Ragusea, Psy. D.

General Manager: Misha McRAE
Director of Education: Carolann Sharkey
Manager of Education Program: Leyla Nedin

Committee Chairs:

Collections Committee: Stephen Killeffer
Conservation Collection Manager:
 Suzanne Gribik

Director of Conservation:
 Stuart Pimm, Ph.D.

Ethics Committee: MaryCarlin Porter

Facilities Management Committee:
 Pat Cummings

Finance Committee: Vicki Grant

Newsletter Editor & Photographer:
 Beryn Harty

Nominating Committee: Rick Harty

Rental Development Committee:
 Celeste Fehlig

INSIDE THIS ISSUE

Photography by Beryn Harty
 unless otherwise specified

Halloween at the Garden	1
GLEE Green Life Event	2
IBI Conceptual Workshop	3-4
Tai Chi Chuan, Key West Tara Mandala & Yoga in the Garden	5
High School Student Interns	6-8
Volunteer Alert	9
Recent Bird Sightings	10
Recent Butterfly Visitors	11
Name That Fruit!	11
Invasive Species Alert	11

**The Key West Tropical
 Forest & Botanical
 Garden partnered once
 again with the
 Lymphoma and
 Leukemia Society to
 BRING BACK A SAFE
 TRICK or TREAT
 HALLOWEEN FOR KIDS
 IN OUR COMMUNITY.
 A separate newsletter
 with photos of the
 event will be circulated
 to members and posted
 on the website. Hope
 you enjoy it!**



Upcoming Calendar Events

Mark Your Calendar

- ◆ 11/6/10: GLEE Green Life Event
- ◆ 11/18: 5-7pm Members Only Watering
Hole Social Event
- ◆ 01/21/11: Annual Meeting
- ◆ 02/18 - 02/20: Gardenfest
- ◆ 03/15 - 03/25: Cuban Cultural Exposition
- ◆ 03/26: Hot Havana Nights

GLEE (Green Living & Energy Education) Green Life Event at the Garden Saturday 6 November from 2 pm to 6 pm

Schedule of Events

- 2:00 - 2:30 pm: Starting Seedlings in Newspaper Pots - Kathryn dePoo, Key West Community Garden
- 2:15 - 3:00 pm: Raw Food Preparation - Charlie Wilson, Help Yourself Cafe
Bike Maintenance 101 - Evan Haskell, Recycle Bike Shop
- 2:30 - 2:45 pm: Composting 101- Kim Gabel, UF / IFAS Monroe County Extension
- 2:45 - 3:15 pm: Safe Alternatives to Toxic Cleaners - Dean Walters, Well-Tech Wellness Products
- 3:00 - 3:30 pm: Landscaping with Natives - Scott Montgomery, Native Landscape Design
- 3:15 - 4:00 pm: Raising Baby Green: Breastfeeding & Cloth Diapers -Catherine Josi, Doula, CCE, CBC
and La Leche League Leader
Bike Maintenance 101- Evan Haskell, Recycle Bike Shop
- 3:30 - 3:45 pm: Composting 101-Kim Gabel, UF / IFAS Monroe County Extension
- 3:30 - 4:30 pm: Planning a Green Truman Waterfront - Jed Regante & Jennifer Languell,
Southernmost Sustainable Community Development Corp
- 4:00 - 4:30 pm: Make Your Own Self-Watering Planters - Rick Smith, Key West Community Garden
- 4:15 - 5:00 pm: Detox & Healthy Weight Loss - Dr. Ross Williams, Chiropractic & Nutrition
Bike Maintenance 101 - Evan Haskell, Recycle Bike Shop
- 4:30 - 4:45 pm: Composting 101 - Kim Gabel, UF / IFAS Monroe County Extension
- 4:30 - 5:00 pm: Make Your Own Sprouts - Theresa Rothaus
- 5:15 - 6:00 pm: Green Your Business - Bridget McDonald of GLEE
Bike Maintenance 101 - Evan Haskell, Recycle Bike Shop
- 5:30 - 5:45 pm: Composting 101 - Kim Gabel, UF / IFAS Monroe County Extension
- Drop-In All Day: How To Make A Rain Barrel, Mike Basham, Footprints

Admission to the Expo is \$5

IBI Group Conceptual Workshop for The New Gardens Visitor Center & Bikeway Trail-head Facility on October 12, 2010

Representatives from IBI met with the Board and staff members of the Key West Tropical Forest and Botanical Garden, as well as with a wide variety of interested individuals from the government, general public, community professionals, members of trail and cultural groups, local neighbors and members of the business community. Renderings demonstrating differing artistic designs and potential building layouts were available for review and input was solicited and collected for review by the design team and the Board.





Community Activities

The Key West Botanical Garden keeps growing as your Community Center promoting good health through group activities and classes provided at the KWTFBG.

Tai Chi Chuan

Learn the ancient Chinese martial art of Tai Chi. Reduce your stress while improving your balance, breathing and circulation led by local martial artist and funambulist Will Soto. Primary focus of this class is the YANG style. Beginner and all ages welcome. No equipment is necessary and loose clothing is recommended. Classes begin Tuesday, November 2, 2010 from 5:30 PM - 6:30 PM. For more information contact Will Soto @ 305-923-9196.

Schedule: Tuesdays, 5:30 6:30 PM; Thursday & Saturdays, 9:00 10:00 AM
\$10.00 a person. Discounts available.

Key West Tara Mandala

Key West Tara Mandala is a Tibetan Buddhist Meditation Sangha that meets weekly in the Nature Chapel.

Wednesdays from 6:00-7:00pm and Saturdays from 10:00am-12:00pm. Classes taught by Ellen Booth Church (Yeshe Choepel) include instruction in meditation and the philosophy of Buddhism.

Schedule of current classes can be found on our website:

Yoga in the Garden

Tuesday & Thursday 10 a.m. ; Thursday Noon & by appointment only - Tuesday 6 pm

Beginners welcome.

Free mini-classes Saturday, Nov. 6 from 2 - 6 p.m. on the Butterfly Look-out Deck during the Green Life Expo.

Drop in \$15; 2 classes \$25; 5 classes \$60; Member discounts!

Call 305-304-5635 for more information, or to reserve the evening class.

High School Students Participating in the Internship Program at the Garden Saturday 9 October



Assembled in Two Groups for their Docent-Guided Tours

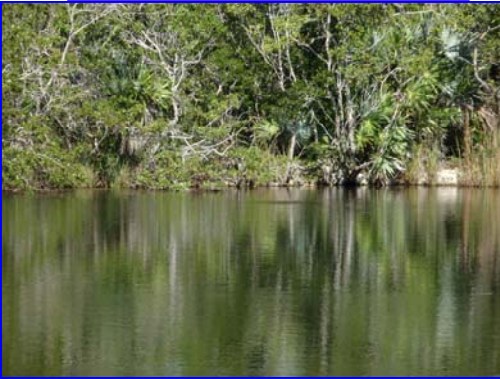


High School Students Internship Program

On Saturday 16 October, student education continued with a field trip to the Blue Hole on Big Pine Key, to a Key Deer Refuge Trail on No Name Key and a visit to Bahia Honda State Park.

Contributors to this experience included: Instructor Ashley Moore, Botanist Steve Killeffer, Conservation Collection Manager Suzanne Gribik, Docent Beryn Harty, Chad Anderson from the Florida Fish and Wildlife Commission and Money Markey from Bahia Honda State Park.

A wide assortment of creatures were available for examination.





ALERT

**Looking for a Maintenance volunteer to help with opening / closing of the Garden and general maintenance to include opening front gate, displaying sign on highway, clearing loop paths, blowing Courtyard and Boardwalk, check bathrooms / restocking, taking sign from highway at 4 PM and locking gate.
Please call Misha (296-1504), if you can help in any way.**

Help Wanted

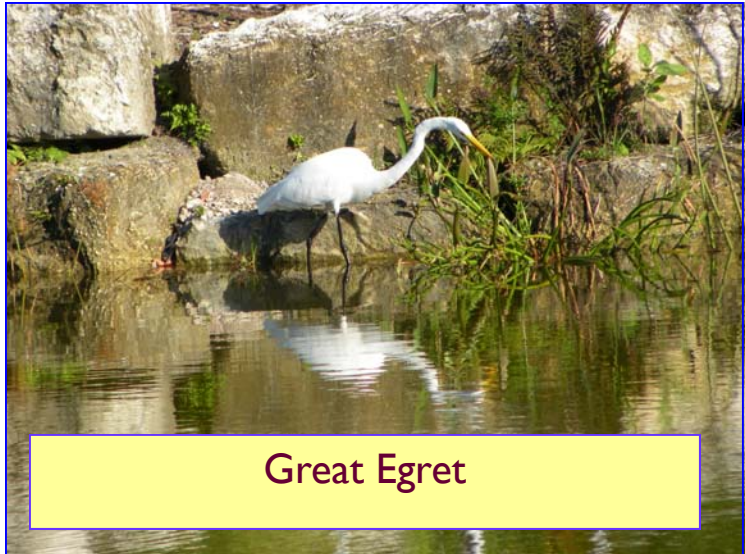
The time is rapidly approaching for me to relinquish the reins of the newsletter, so that someone else can have the pleasure of creating one each month.

After all, change and variety can be fun!

Interested parties and / or “wanna-be” journalists, please contact me at nstaaf1@aol.com.

Beryn <:o)

Beryn's Recent Birds Seen Enjoying the Garden



Great Egret



Blue Grey Gnatcatcher



Prairie Warbler



Great Blue Heron

Identify This Fruit

Win one of Beryn's Floral Guides. Be the first to email her at NSTAAFL@aol.com with its name. Last month's mystery fruit was from the Shiny Wild Coffee



This one is fruiting right now!

Membership can now be paid on the website via credit card.

Just go to our website, www.kwbgs.org - You'll see the link on the right side of the Home page.

**The Key West
Tropical
Forest
& Garden**
Botanical

The Key West Tropical Forest
& Botanical Garden

5210 College Road
Key West, FL 33040

305-296-1504
kwbgs@kwbgs.org

Recent Butterfly Visitors



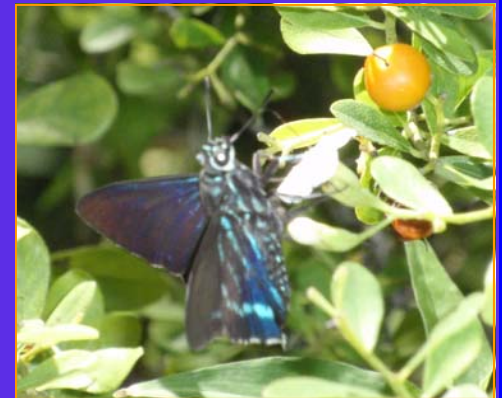
Giant Swallowtail Pair
(*Papilio cresphontes*)



Fiery Skipper
(*Hylephila phyleus*)



Florida Duskywing
(*Ephyriades brunnea floridensis*)
AN IMPERILED SPECIES



Mangrove Skipper
(*Phocides pigmalion*)

Invasive Exotic Alert

Australian Umbrella Tree (*Schefflera actinophylla*)

Although prized by many due to its stunning array of bright red flower spikes and evergreen foliage, this plant is an invasive exotic. It poses such a risk to native plant species, that it has made its way to the Florida Exotic Pest Plant Council's Category I List of Invasive Plant Species. Visit their website for additional information on such threats — www.fleppc.org

